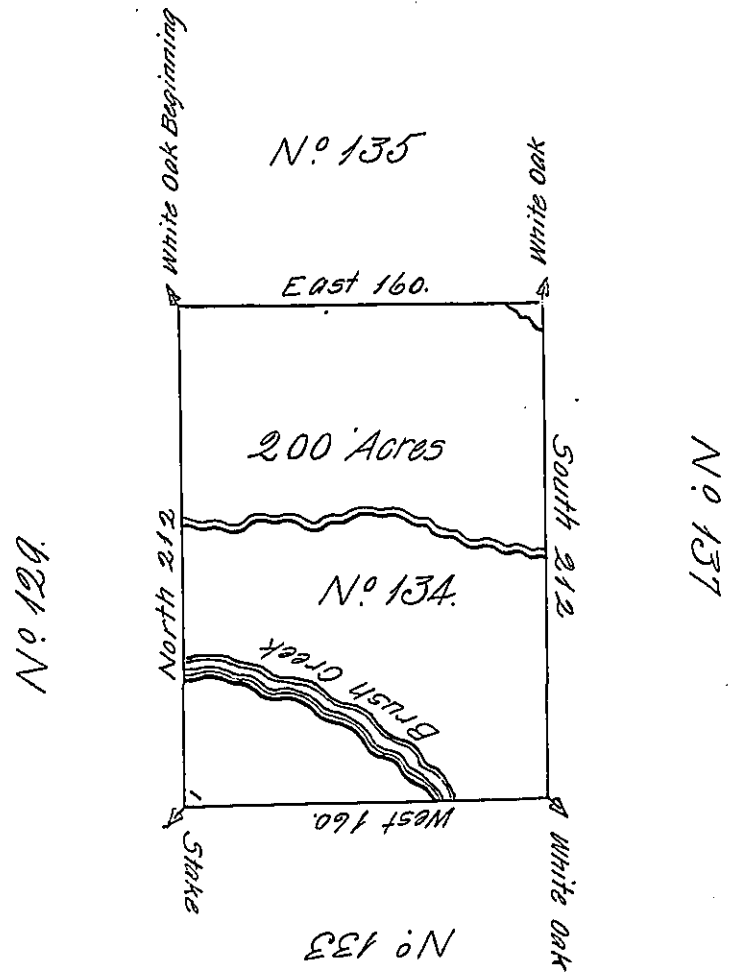


✓



The Above is a Draught of Survey mad in the month July 1785 In Pursuance of Instructions from the Surveyor General Dated 22^d day of Jan^y 1785 Situate on the North Side of the Ohio on the North side of Brush Creek in District N° 2 Containing two hundred Acres with Allowance of 6 P Cent

Dan^l Leet D.S

John Lukens Esq^r Surv. Gen^l

IN TESTIMONY that the above is a copy of the original remaining on file in the Department of Internal Affairs of Pennsylvania, made conformably to an Act of Assembly approved the 16th day of February, 1833, I have hereunto set my Hand and caused the Seal of said Department to be affixed at Harrisburg, this fourteenth day of November 1905.

James R. Brown
Secretary of Internal Affairs.